

180° AIR VENT TUBE AS SPECIFIED

WATER AIR RELEASE VALVE, MANUFACTURED BY GA INDUSTRIES INC. MODEL 902 SMALL ORIFICE AIR RELEASE VALVE OR APPROVED EQUIVALENT WITH 1" NPT INLET SIZE. VALVE SHALL BE FULLY COATED WITH COAL TAR EPOXY.

1" INLET VALVE SIZE

1" S.S. THREADED PIPE (N.P.T)

1" S.S. AWWA BRONZE BALL VALVE LEVER OPERATED. SS SHAFT & BALL

1" S.S. THREADED PIPE (N.P.T)

SERVICE SADDLE CASCADE CS22

USE 316 STAINLESS STEEL STRAPS AND BOLTS TO SECURE SADDLE TO FORCEMAIN

WATER MAIN

NEOPRENE SERVICE SADDLE GASKET

**PLAN VIEW**

MANHOLE FRAME AND COVER LOCATION. SEE DETAIL THIS SHEET

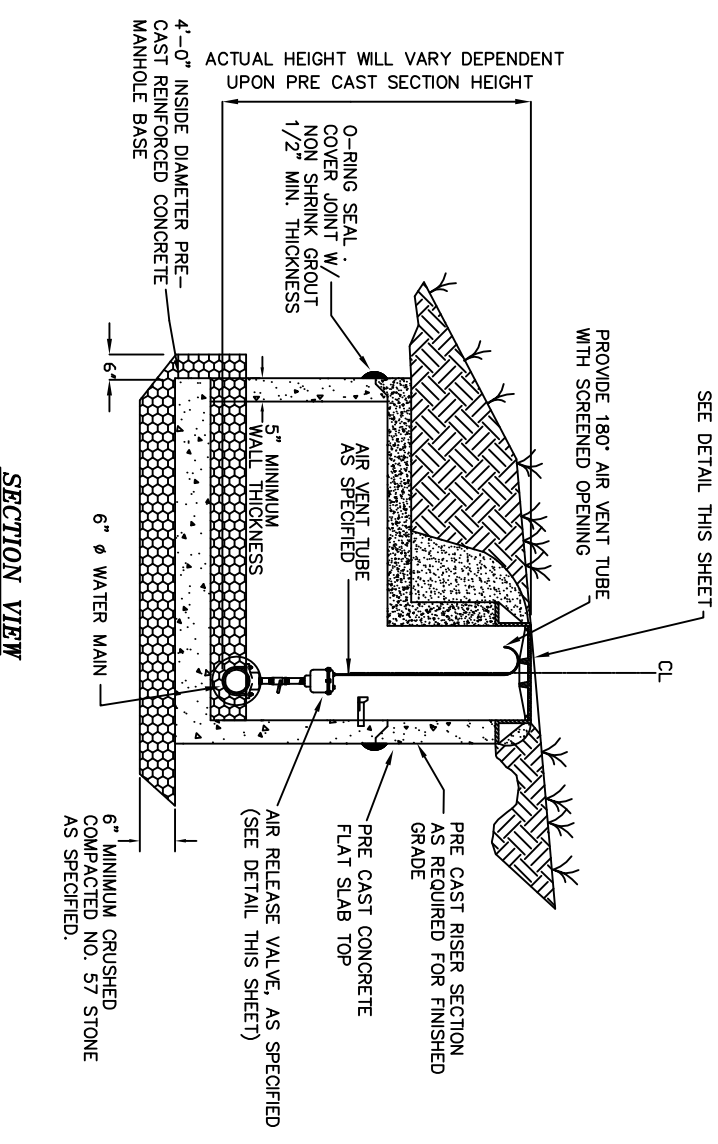
4'-0" INSIDE DIAMETER PRE-CAST REINFORCED CONCRETE MANHOLE RISER

MANHOLE STEPS @ 16" O.C. AS SPECIFIED. ALIGN STEPS ON INTERIOR ECCENTRIC FACE OF MANHOLE

AIR RELEASE VALVE (SEE DETAIL THIS SHEET)

ACTUAL DIMENSIONS ARE DEPENDENT UPON VALVE MAKE/MODEL, TOLERANCES, AND ASSEMBLY.

CONTRACTOR SHALL PROVIDE ALL NECESSARY FITTINGS TO COMPLETE THE CONNECTION USING HEAVY DUTY 316L STAINLESS STEEL.



**SECTION VIEW**

ACTUAL HEIGHT WILL VARY DEPENDENT UPON PRE CAST SECTION HEIGHT

4'-0" INSIDE DIAMETER PRE-CAST REINFORCED CONCRETE MANHOLE BASE

5" MINIMUM WALL THICKNESS

6"  $\phi$  WATER MAIN

PRE CAST RISER SECTION AS REQUIRED FOR FINISHED GRADE

PRE CAST CONCRETE FLAT SLAB TOP

AIR RELEASE VALVE, AS SPECIFIED (SEE DETAIL THIS SHEET)

6" MINIMUM CRUSHED COMPACTED NO. 57 STONE AS SPECIFIED.

PROVIDE 180° AIR VENT TUBE WITH SCREENED OPENING

SEE DETAIL THIS SHEET

CL

O-RING SEAL COVER JOINT W/ NON SHRINK GROUT 1/2" MIN. THICKNESS

AIR VENT TUBE AS SPECIFIED

**WATER AIR RELEASE VALVE**

NOT TO SCALE