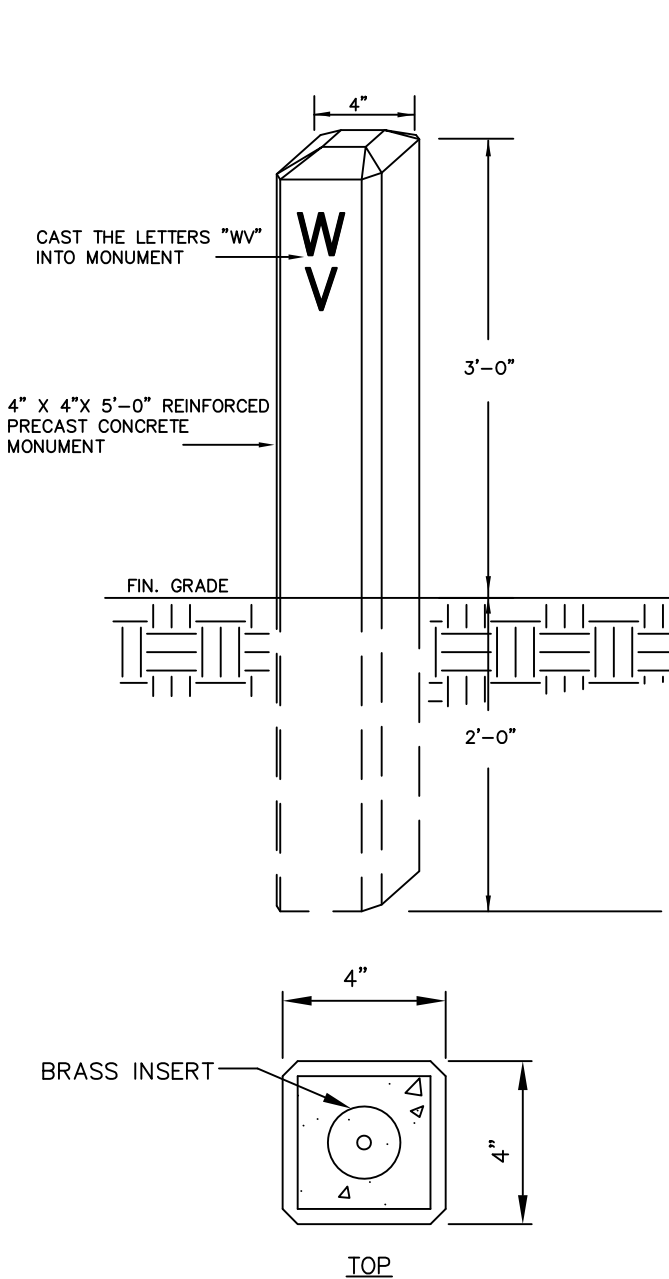


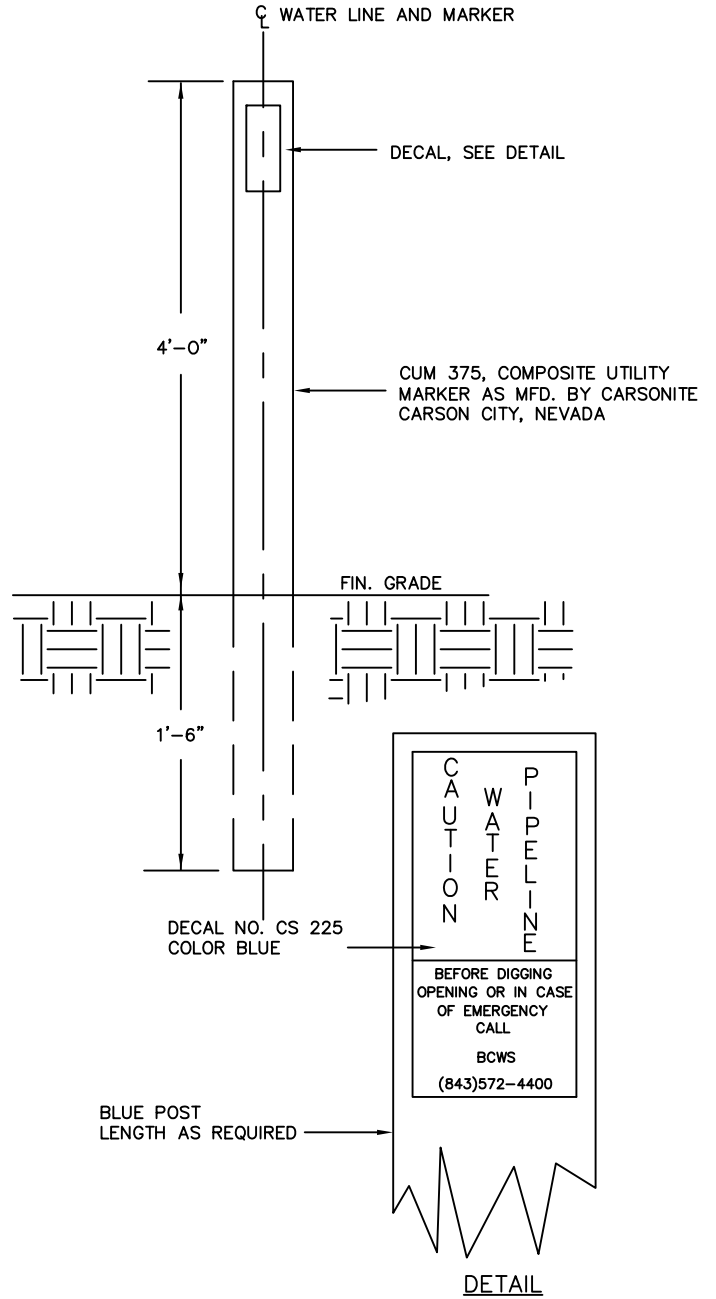
1. CHAMFER ON FRONT TWO SIDES.
2. BRASS PLATE ON TOP WITH DISTANCE AND DIRECTION OF VALVE.
3. TWO #3 REBAR REINFORCING.
4. CONCRETE 3000 PSI
5. LETTERING ON FRONT SIDE
6. PLACE AT ALL VALVE LOCATIONS OR AS DIRECTED BY ENGINEER

NOTE: PIPELINE MARKERS TO BE LOCATED EVERY 1000' ALONG THE WATER LINE & ABOVE FITTINGS WHERE THE ALIGNMENT CHANGES, OR AS DIRECTED BY THE ENGINEER.



VALVE MARKER

NOT TO SCALE



LINE MARKER

NOT TO SCALE

WATER PANEL 9