

SERVICE CONNECTIONS WITHOUT METER

1 Service Saddle

See Appendix F29 BCWS Approved Parts List.

2 Corporation Stop

Minimum size - 1". See Appendix F29 BCWS Approved Parts List.

3 Polyethylene Water Service Tubing

Service Tubing shall be 1" copper tubing size (CTS) OD polyethylene suitable for underground water services, in conformance with ASTM D2737 (PE 3406), with a rated working pressure of 160 psi. For dual service installation use 1" CTS tubing between service tee and meter box. Service tubing shall be blue in color.

4 Insert Stiffener/Liner

See Appendix F29 BCWS Approved Parts List.

5 Curb Stop

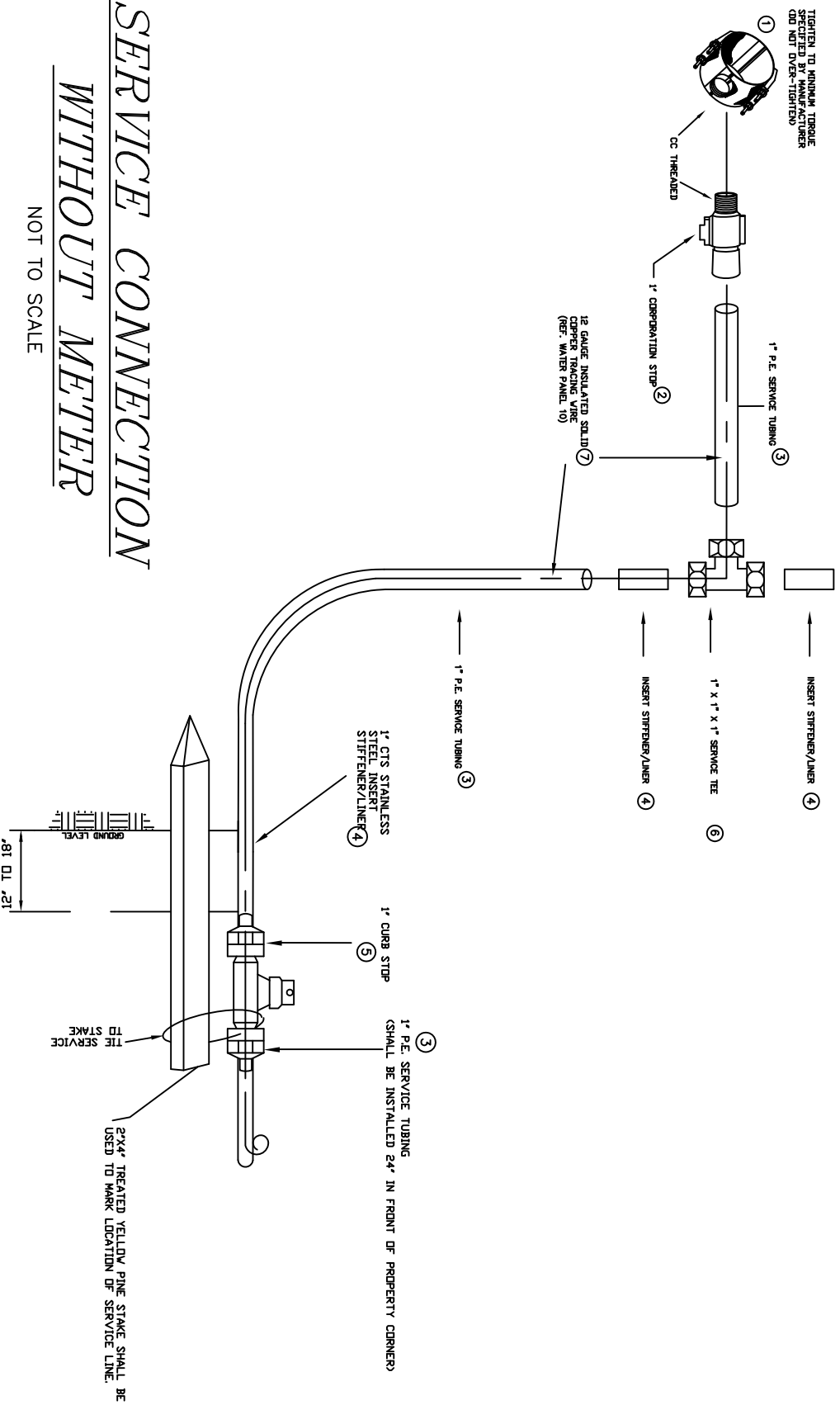
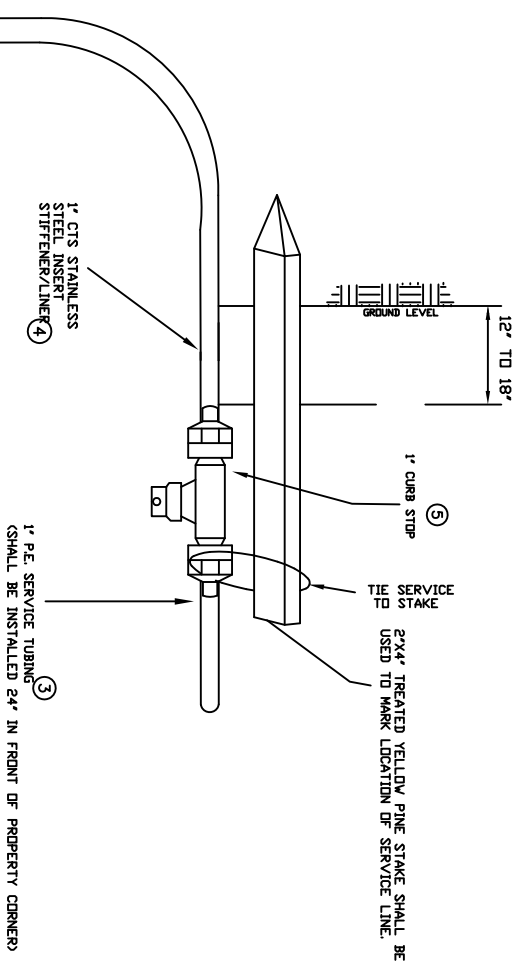
Minimum size - 1". Note: since meter boxes have internal curb stop, curb stops are to be used only to terminate services to vacant lots. See Appendix F29 BCWS Approved Parts List.

6 Dual Service Installation

To split 1" CTS polyethylene plastic tubing (PET) to serve two customers, use 1"x 1"x 1" grip joint tee for CTS PET. Install 3' of 1" CTS PET on both sides of the grip joint tee to allow for BCWS meter box installation.

7 Tracer Wire

Install tracer wire for both single and double services. Coil and secure the end to the stake.



SERVICE CONNECTION WITHOUT METER

NOT TO SCALE

WATER PANEL 1B

BERKELEY COUNTY WATER AND SANITATION
POTABLE WATER & SANITARY SEWER STANDARDS
REVISED 04/13/10