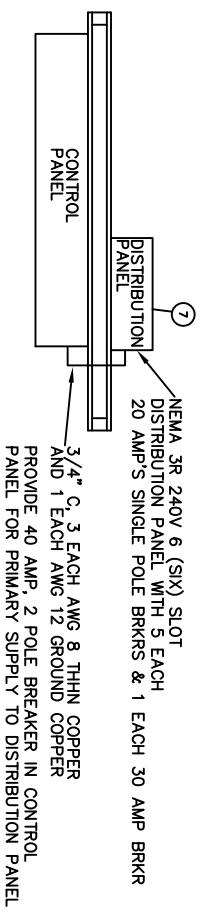
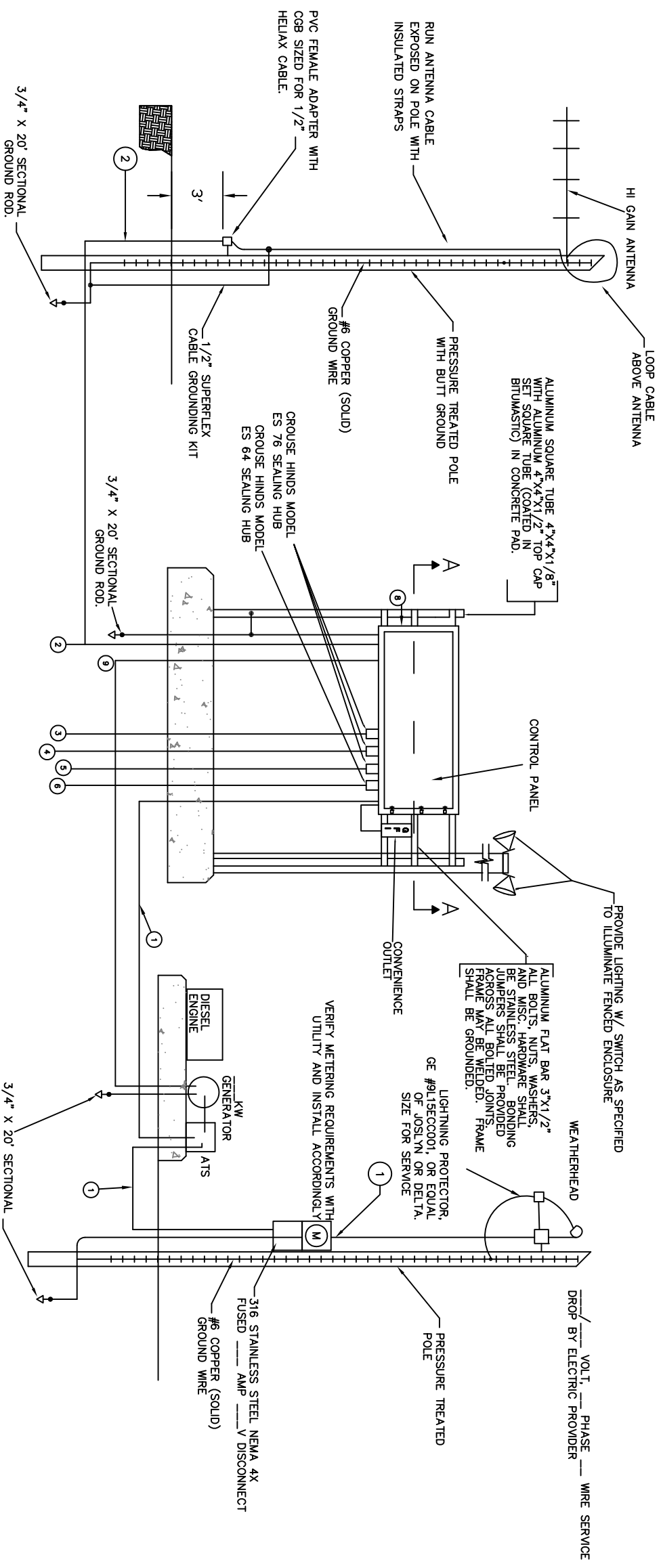
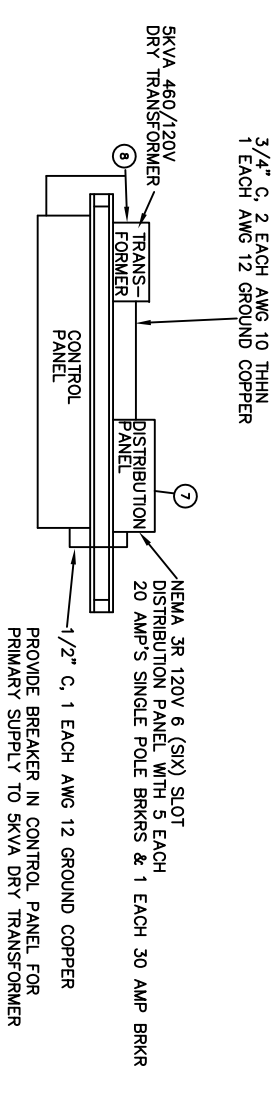


### 240 VOLT STATION



- ① — CONDUIT SERVICE. — AMP SERVICE. W/ NEUTRAL SIZED PER NEC FOR PROVIDED SERVED. ALL CONDUCTORS SHALL BE THHN COPPER.
- ② TO ANTENNA. USE 1/2" SUPERFLEX CABLE AND CONNECTORS.
- ③ 2" E.C. (SPARE)
- ④ 2" C. (PUMP 1 CABLES)
- ⑤ 2" C. (PUMP 2 CABLES)
- ⑥ 1-1/4" C. (MULTI-TRODE CABLE)
- ⑦ 1/2" C. 2 EACH AWG 12 THHN + 1 EACH AWG12 GROUND TO ENGINE BLOCK HTRS.
- ⑧ PRIMARY TRANSFORMER SUPPLY 2 AWG12 + 1 AWG 12 GND
- ⑨ 1/2" C 6 EACH AWG 14 MTW 90°

### 460 VOLT STATION



ELEVATION VIEW  
N.T.S.

## TYPICAL DUPLEX PUMP STATION ELECTRICAL POWER RISER DIAGRAM

NOT TO SCALE

### SEWER PANEL 3C

BERKELEY COUNTY WATER AND SANITATION  
POTABLE WATER & SANITARY SEWER STANDARDS

REVISED 01/11/11